

CMC S18F

THE SPECIALIFT

monitor

the world's
best equipment
supported
locally



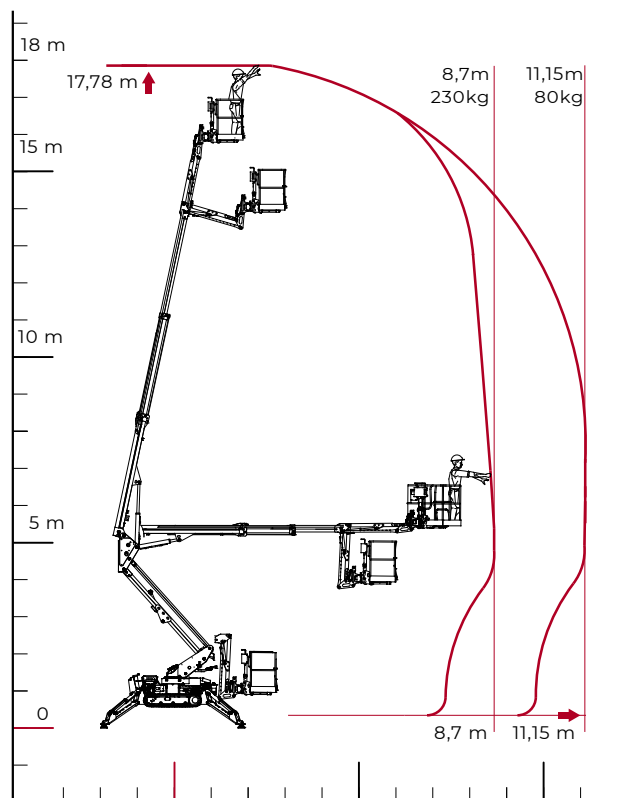
TECHNICAL SHEET

PERFORMANCE AND DIMENSIONS

Main features

Equipped with a single pantograph and a two-stage telescopic boom plus jib, mechanically adjustable tracks in height and width and with an impressive lateral outreach, this is a multipurpose aerial platform with amazing performance which fully meets the needs of the both end user and rental company.

Max. working height	17,78 m
Max. reach with 80 kg	11,15 m
Platform height	15,78 m
Max. load in basket	230 kg
Basket dimensions	1,4 x 0,7 x 1,1 m
Basket rotation	+/-90° (options)
Turret rotation	+/- 178°(356° non-continuous)
Total weight	2495 Kg



1800 025 024
monitor.net.au

@MonitorAUS



