



OPTIMUM LIFECYCLE PERFORMANCE



# Versalift VST5000 on Isuzu FTS800



16.50m



9.50m



160kg



## Versalift VST5000 on Isuzu FTS800



The Versalift VST5000 on an Isuzu FTS800 is an ultra versatile unit, suitable for live-line, line construction and arborist work - making it a popular choice for many lines companies.



*Robust. Versatile. Reliable*

ZERO VEHICLE DOWNTIME | WAIMEA.CO.NZ | 0800 60 60 61





## Versalift VST5000 on Isuzu FTS800

The Versalift VST5000 E.W.P offers 17.3m of work height and an impressive 11.5m horizontal reach. This insulated category-c boom has an articulating boom section and telescopic point and shoot functionality, enabling the ability to go up and over obstacles. Four outriggers provide excellent correction. Two-man, 272kg bucket capacity, hydraulic tool ports and uni-lever control for multi-function with one hand makes it a well appointed build for live lin, construction and arborist applications.

Build options include sign and cone holders, slide out vice and a range for toolboxes to chose from.

The Isuzu FTS800 4x4 truck is driven with ease with the automatic transmission.

This well appointed unit can be used in a wide range of urban or rural applications.



*The entire build design is focused on highly efficient and safe use of the boom with easy deck access and safety handrails all the way up to the bucket*





# Versalift VST5000 on Isuzu FTS800



2-man, 272kg bucket capacity

Hydraulic tool ports and uni-lever control for multifunction

Articulating boom section & telescopic point and shoot functionality

Category-C insulated boom

17.3m work height, 11.5m horizontal reach

Optional: Toolboxes

Easy Bucket Access

Optional: Sign and cone holders

Four outriggers provide excellent correction



## SPECIFICATIONS

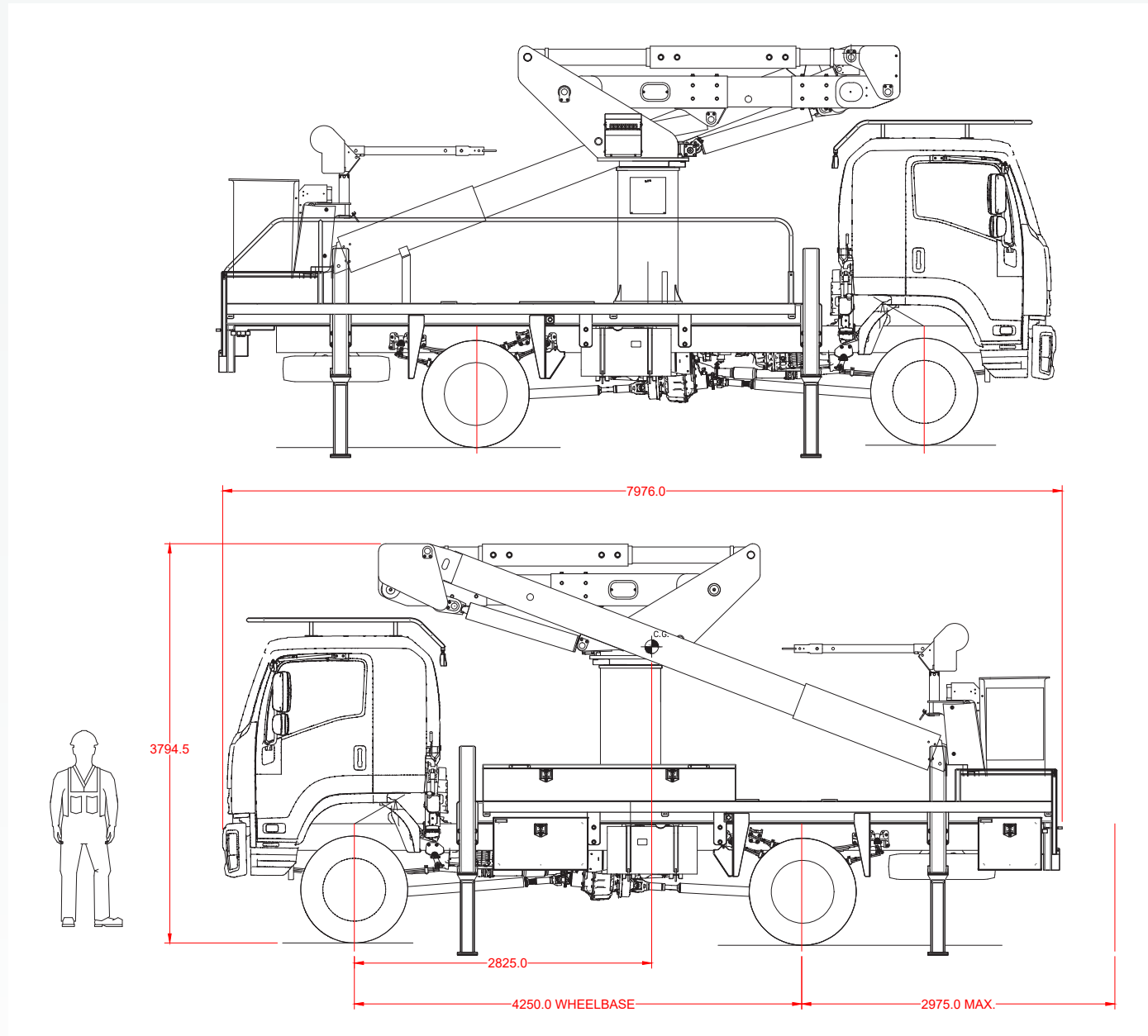


Specifications:	
Manufacturer	Versalift
Model	VST 5000
Working height	17.3m
Height(ground to bucket floor)	15.3m
Working radius	11.5m
Insulation	C (46Kv)
Boom style	Articulating/Telescopic
Boom slew rotation	Continuous
Bucket rotation	Yes
Bucket rotation powered	Hyd.
Bucket capacity SWL	272kg
Bucket dimension (LxWxH)	1070x610x1100
Control type	Hyd.
Hydraulic tool port at bucket	Yes
Truck Specifications:	
Make	Isuzu
Model	FTS800
Specifications	4x4
HP	260
Transmisson	Allison Auto
Difflocker/ Traction control	S



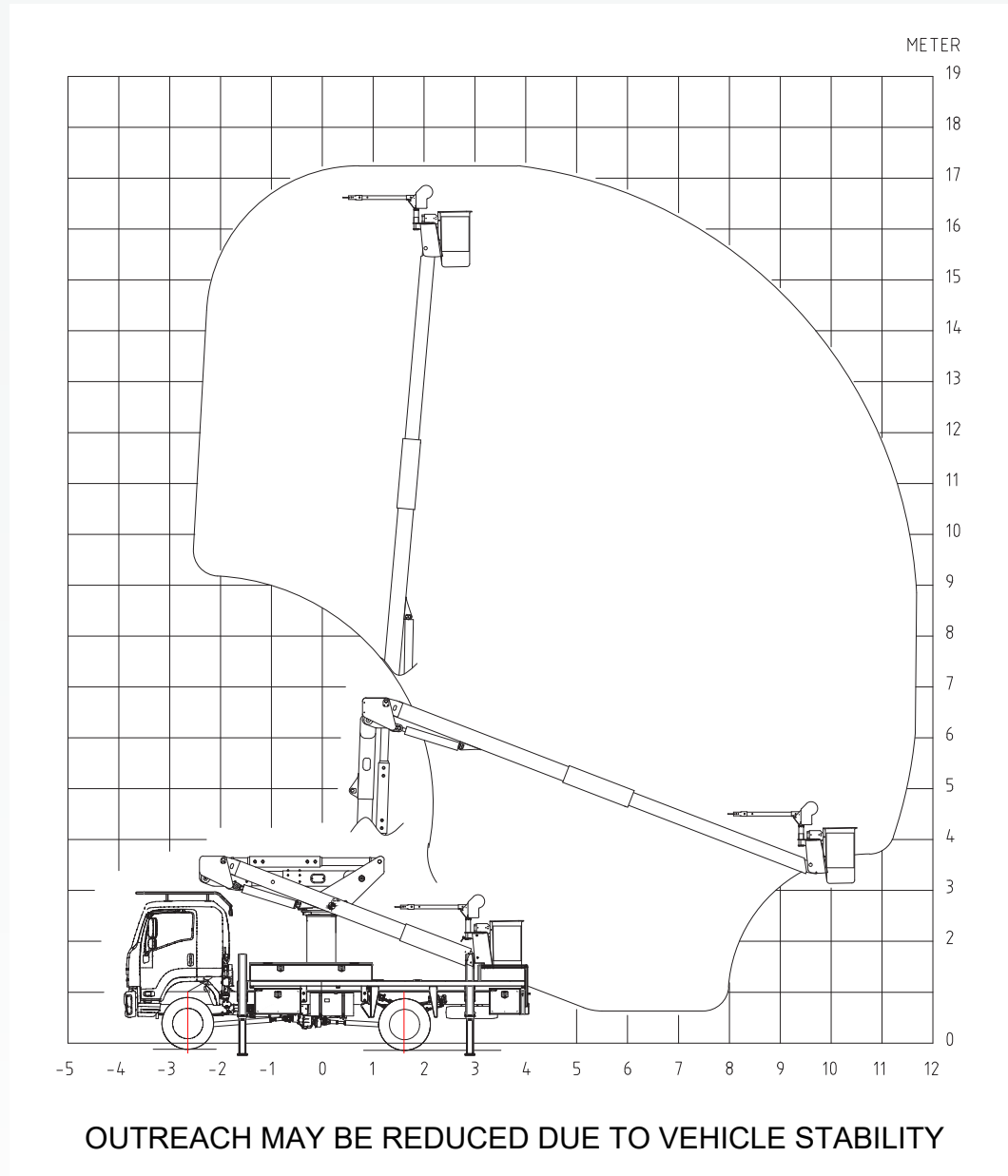


## RANGE DIAGRAM





# RANGE DIAGRAM



ZERO VEHICLE DOWNTIME | WAIMEA.CO.NZ | 0800 60 60 61





## OUR ECOSYSTEM OF SUPPORT



### TURNKEY BUILD

**A turnkey design and build means we take total responsibility for all elements of a unique build.**

From order through to delivering a fit for purpose specialist truck that immediately gets to work in your business. This process involves many years' experience in weight ratios, stability certification, compliance and actual hands-on knowledge of how these specialist trucks are used in the field and the ergonomics involved in a build. As approved distributors for the world leading global brands, we source specialist units direct from the factory and build onto NZ chassis' with all elements of the build being conducted from our own skilled inhouse resources.



### HIRE OR RENTAL

**Waimea Group realise the challenges our customers face.**

In fluctuating workloads and short-term contracts being awarded, the core need of every project demanding specialist trucks and equipment still exists. Our hire fleet makes available on-demand basis ensuring you have the resource to scale up or down for workload without creating fixed overhead cost to your business. Our hire units are ideal testing ground to 'try before you buy' and ensure that you have had actual experience with equipment before making a significant capital investment.



### LEASE

**Fleet leasing is a well-established way of operating a vehicle fleet**

Whether you're a small contractor or larger organisation, leasing rather than buying assets outright enables you to expand your fleet without significantly affecting cash flow or compromising on the specification of the vehicle.



### MAINTENANCE

**Our 365 Performance Plan is a key pillar in our vision of the utility industry operating with zero vehicle downtime.**

The 365 Performance Plan is based around what is preventative versus corrective maintenance. The elimination of unplanned downtime and long-term reliability can only come from advanced planning, trained service technicians, availability of parts and first-call fix rates. *Read more about our 365 Performance Plan on the next page.*



### REBUILD & REFURB

**We recognise that not all operators want to purchase new and a key part of getting the best out of a used asset is refurbishment.**

Our dedicated service team have years of experience in undertaking refurbishments of specialist units. Through our inhouse expertise including our people, skills, equipment and spare parts stock we can bring used equipment up to a compliant and certified standard that enables them to deliver continued performance for the next stage of their life.



### APPROVED USED

**Our hire fleet made available for purchase as 'approved used'**

This creates opportunities for those with commercial budgets or contracts that can't attain to new build investments. With over 120 specialist trucks across our rental fleet, we'll have a specification and budget to match your business.







# 365 Performance Plan



## OUR SERVICE MAINTENANCE PLAN

Our 365 Performance Plan is a key pillar in our vision of the utility industry operating with zero vehicle downtime. The 365 Performance Plan is based around what is preventative versus what is corrective maintenance. The elimination of unplanned downtime and long-term reliability can only come from advanced planning, trained service technicians, availability of parts and first-call fix rates. Our customer service team takes direct responsibility for these factors so you can rely on us for vehicle productivity right through its lifecycle.

A typical inspection on a bucket truck covers every point on the unit including filters, lubrication, and critical fastener torque procedures, as well as a visual inspection for cracks and general wear and tear. The technician will also perform an operational calibration test and adjustment to check for unit ease of operation and correct speed.

Our system keeps an electronic record of your service dates and specific details of your E.W.P maintenance ensuring that from both a fleet management and health and safety perspective, the asset is compliant with current legislation and its future residual value is always being protected.

We understand that to achieve the highest levels of equipment performance and reliability, you need to have a system in place. A maintained service plan from Waimea Group ensures that your asset investment is generating maximum return and optimisation with performance in year five the same as it was in year one.

We bring manufacturers knowledge and expertise right to your vehicle wherever you are and take responsibility for the routine of those inspections and services. Put simply, you focus on your business outcomes and we allow you to take for granted the maximum vehicle productivity.

## SERVICE INCLUSIONS

- **EWP INSPECTION** – Inspection and test of every point on the unit
- **EWP SERVICE** – Full service supported by online portal for tracking and records. Opportunity for operator training as required.
- **WARRANTY** – Warranty extension to 24-months from new
- **DISBURSEMENTS & COSTS** – Includes labour, travel costs and reports
- **BRANDS** – Available on all Versalift, Donghae and CTE booms
- **TECHNICAL SUPPORT** – 24/7 phone support for operators in the field
- **PARTS** – Includes service consumable parts i.e. filters. Wearing parts sourcing can be done in advance of the machine's requirement to minimize cost and future downtime.
- **TRAINING** – Refresher training from technician whilst onsite



# GET IN TOUCH

WAIMEA.CO.NZ | 0800 60 60 61



OPTIMUM LIFECYCLE PERFORMANCE



## CONTACT DETAILS



**Gareth Deck**  
**BUSINESS DEVELOPMENT -  
POWER UTILITIES**

✉ [gareth.deck@waimea.co.nz](mailto:gareth.deck@waimea.co.nz)  
☎ 021 812 581

ZERO VEHICLE DOWNTIME | WAIMEA.CO.NZ | 0800 60 60 61

