



RAYCO

A MORBARK® COMPANY



MADE FOR **MORE** TO KEEP PACE WITH **YOU!**

C120 FORESTRY MULCHER

FEATURES AND BENEFITS

- 120-hp Cummins QSF3.8L T4F diesel engine
- Super flow hydrostatic circuit for mulcher head
- Mulcher head with 6-foot cutting width
- High/low flow aux hydraulic circuit for attachments
- Purpose-Built Forestry Mulcher
- Hydraulic cab tilt for easy access to critical components
- Rear-mounted hydraulic winch
- Elevated cooling system for hydraulics and A/C
- Reversing fans (engine & limbriser)
- 18" rubber tracks (C120R)
- 20" Steel tracks (C120S)
- High/low travel speed with 7mph FAST Track (FAST Track only available on C120R)
- 3-Bar street pads optional on C120S



MORBARKDEALERS.COM



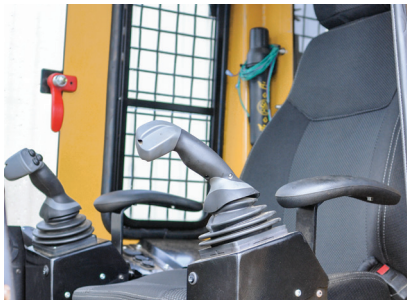
MORBARK®

C120 FORESTRY MULCHER SPECIFICATIONS

GENERAL	120RA US (METRIC)	120SA US (METRIC)
Weight of Carrier with Mulcher	16,725 lb (7,586 kg)	17,660 lb (7,983 kg)
Length of Carrier with Mulcher	17' (5.2 m)	
Height	8'6" (2.6 m)	
Width	7' (2.1 m)	7' (2.1 m)
Engine	120-hp (88 kW) Cummins QSF 3.8L, T4F	
Fuel Type	Diesel	
Fuel Capacity (tank)	45 gallons (170.3 L)	
Hydraulic Tank	14 gallons (53 L)	
Track Width	18" (450mm)	20" (500 mm)
Super Flow Hydrostatic Cutter Head Circuit	57 gpm (216 L/min)@ 5,800 psi	
Attachment Flow High	40 gpm (151 L/min)@ 3,770 psi	
Attachment Flow Low	20 gpm (76 L/min)@ 3,770 psi	
Travel Speed High	4.7 mph (7.6 km/h)	
Travel Speed Low	2.6 mph (4.2 km/h)	
Fast Track (optional)	7 mph (11.3 km/h)	N/A
Cab Certifications	ROPS ISO 8082 • FOPS ISO 8083 • OPS ISO 8084	

Mulcher Head Model	Predator Mulching Head	Denis Cimaf Mulching Head
Weight	3,465 lb (1,571.7 kg)	3,075 lb (1,395 kg)
Overall Width	7' (2.1 m)	7'3" (2.2 m)
Rotor Diameter	16.75" (42.55 cm)	18" (46 cm)
Rotor Speed	2,200 RPM	2,500 RPM
Cutting Width	6' (1.8 m)	6'2" (1.9 cm)
Max Mowing Height	7'5" (2.3 m)	
Cutter Teeth	36 Carbide Tipped Reversible	27 Sharpenable Planar

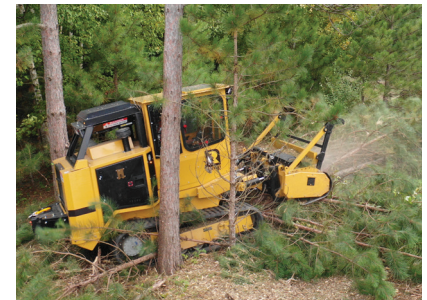
Specifications may vary with equipment options



Large, comfortable cabin with side entry.



Hydraulic rear winch with 12,000-pound capacity.



Purpose-Built Forestry Mulcher