




	Dimensioni / Dimensions (H x W x L): 3,08 x 2,23 x 7,4 m
	Peso / Weight: 25200 kg + 6600 kg zavorra / ballast
	Capacità di sollevamento / Lifting capacity: 40000 kg
	Raggio massimo di lavoro / Maximum working radius: 42,5 m
	Altezza massima di sollevamento con Jib idraulico (dal terreno) Maximum lifting height with hydraulic Jib (from the ground): 48 m
	Altezza massima di sollevamento (sotto terra) Maximum lifting height (underground-winch): - 105 m



M4000

M RANGE

#### M4000. Potenza, accessibilità e versatilità.

**M4000**, un'incredibile gru compatta unica nel suo genere. Frutto della ricerca e dell'evoluzione tecnologica del team engineering BG LIFT. M4000 trasforma le problematiche di sollevamento, accessibilità e trasporto in soluzioni semplificate per l'operatività di tutti i giorni, facilitando l'impiego anche in situazioni operative considerate fino ad oggi impossibili, sia per gli spazi disponibili che per le performance di sollevamento. M4000 è anche un'instancabile gru Pick & Carry capace di muoversi con precisione millimetrica in spazi ridotti.

#### M4000. Power, accessibility, and versatility.

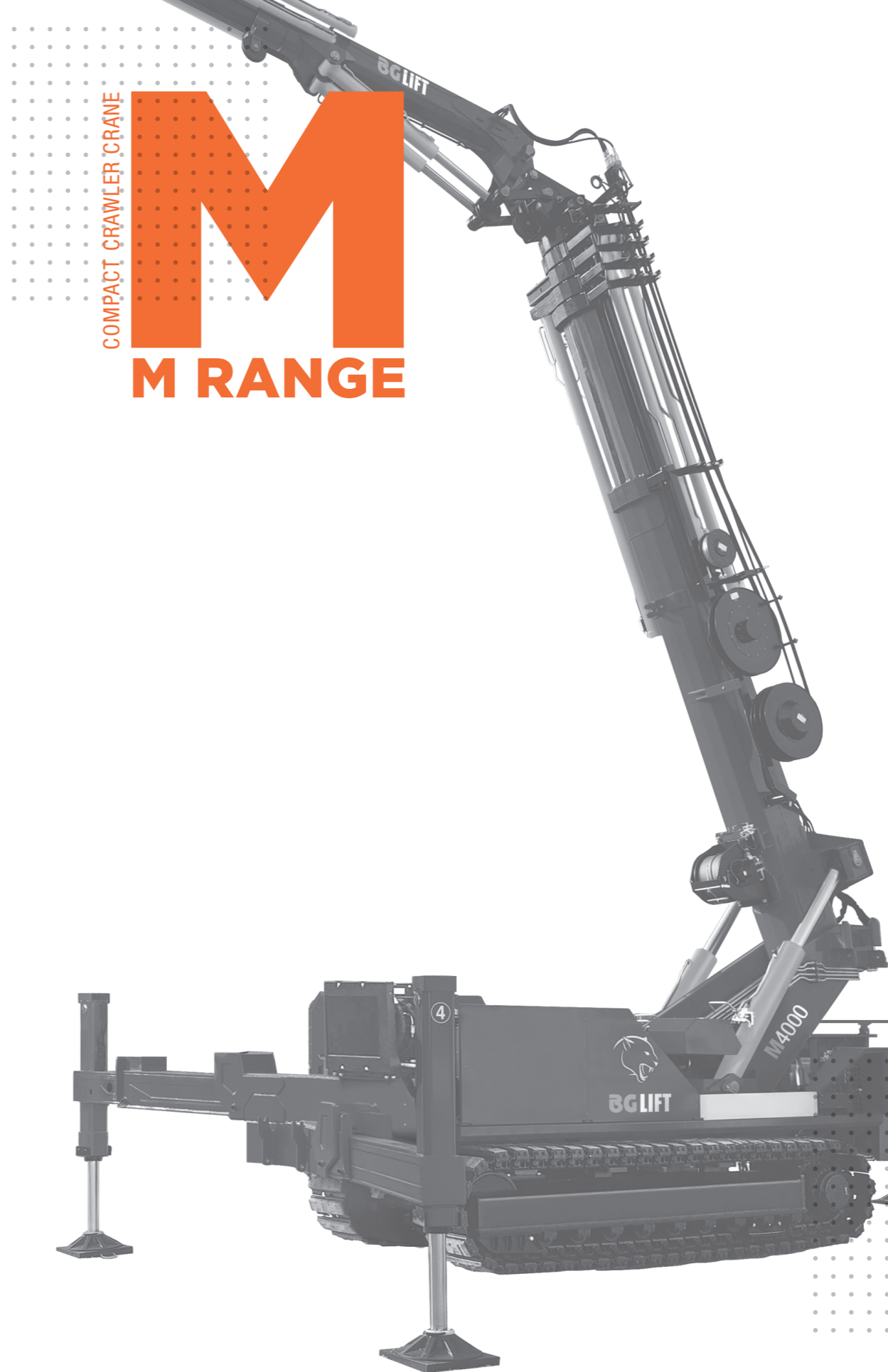
**M4000**, an incredible unique compact crane. An outstanding result of accurate research and technological evolution of the engineering team BG LIFT. M4000 transforms lifting issues, accessibility and transport in simplified solutions for everyday operation. It makes easier the use even in operational situations considered impossible up until today, both in the available spaces and in the lifting performance. M4000 is also a tireless Pick & Carry crane capable of moving with millimeter precision in small spaces.

*I dati tecnici possono essere modificati senza preavviso / Technical data can be modified without prior notice*



BG LIFT srl  
Via Lionello Fiumi, 22  
37010 Cavaion Veronese (VR) Italy  
Phone: +39 045 8240360  
E-mail: info@bglift.com  
www.bglift.com

**BG LIFT**   
SIMPLE ANSWERS TO COMPLEX LIFTING REQUESTS



COMPACT CRAWLER CRANE  
**M**  
M RANGE

**M4000**  
COMPACT CRAWLER CRANE

M RANGE

DB0011\_0-ITA-EN

**BG LIFT**   
SIMPLE ANSWERS TO COMPLEX LIFTING REQUESTS

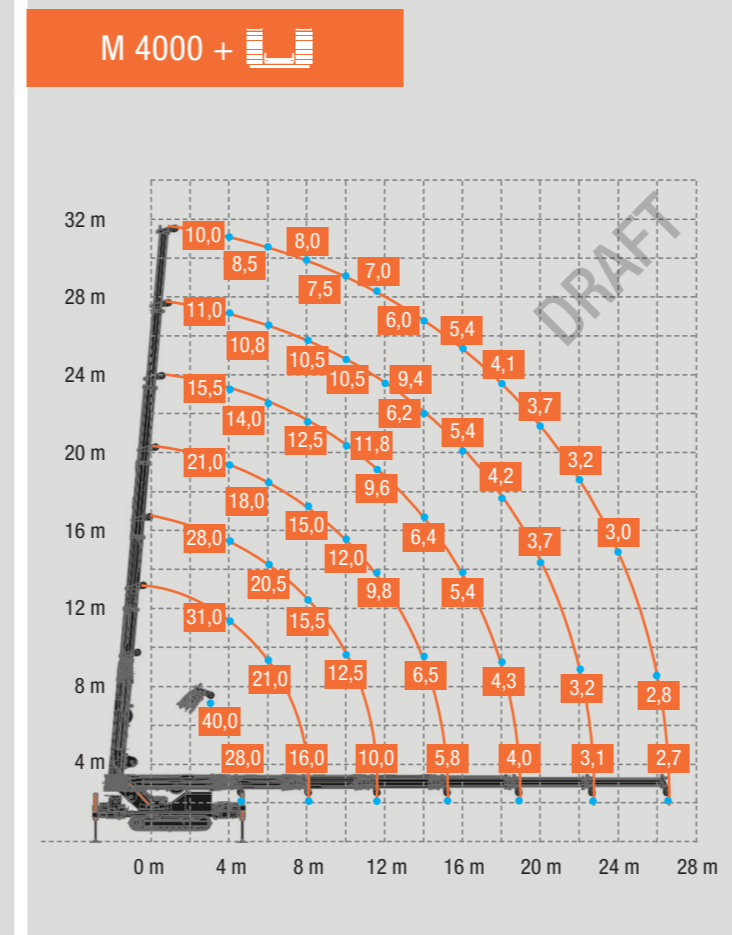
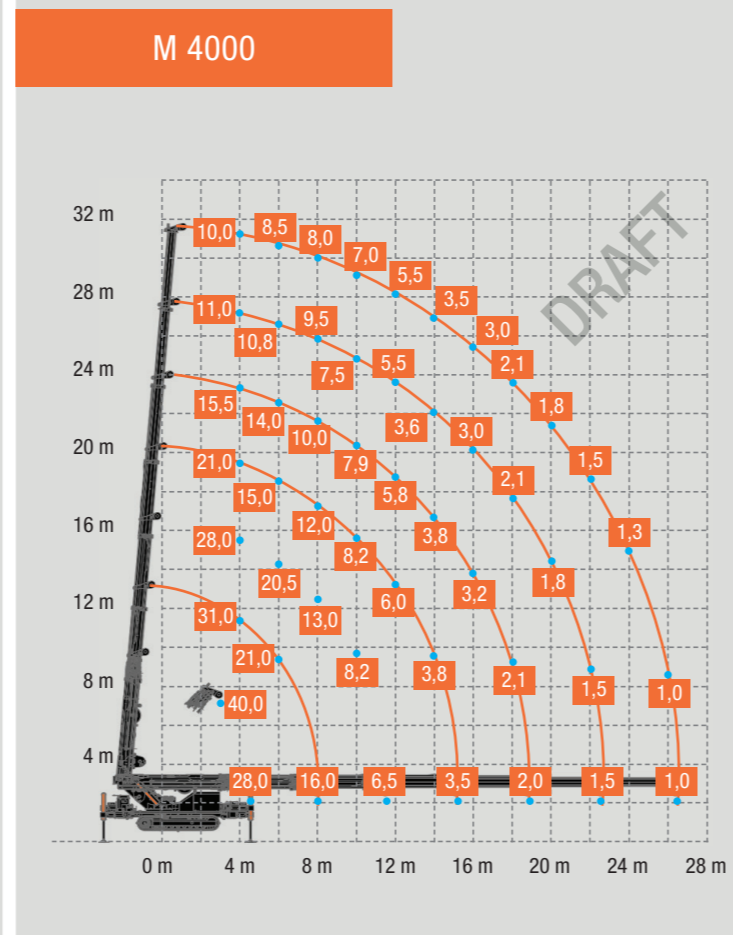


# M4000

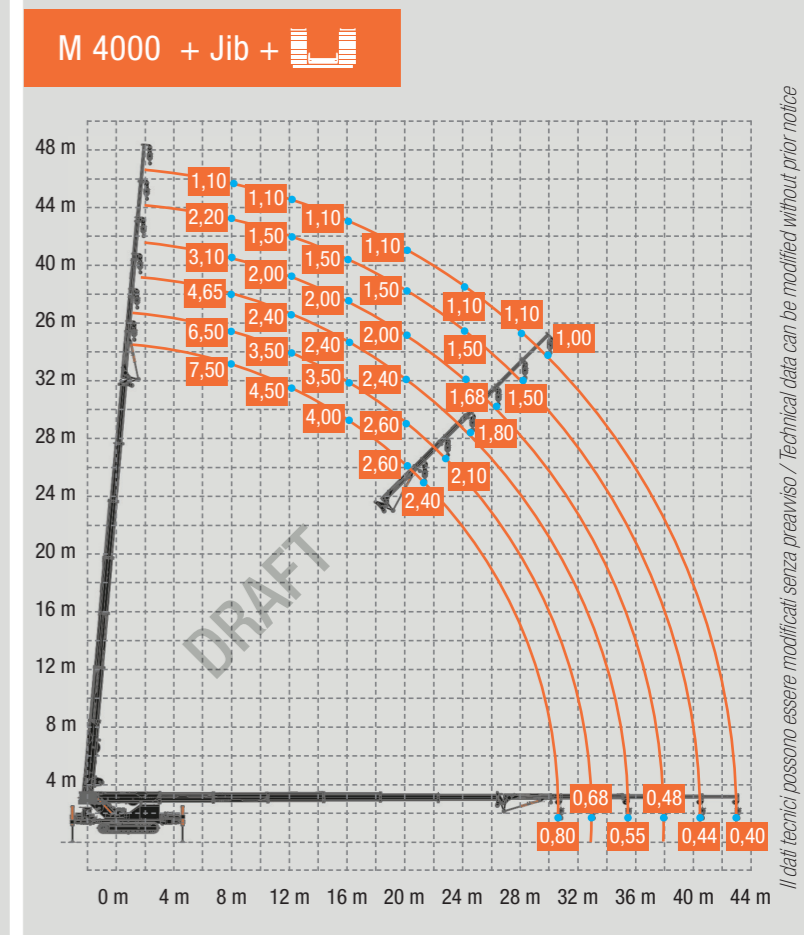
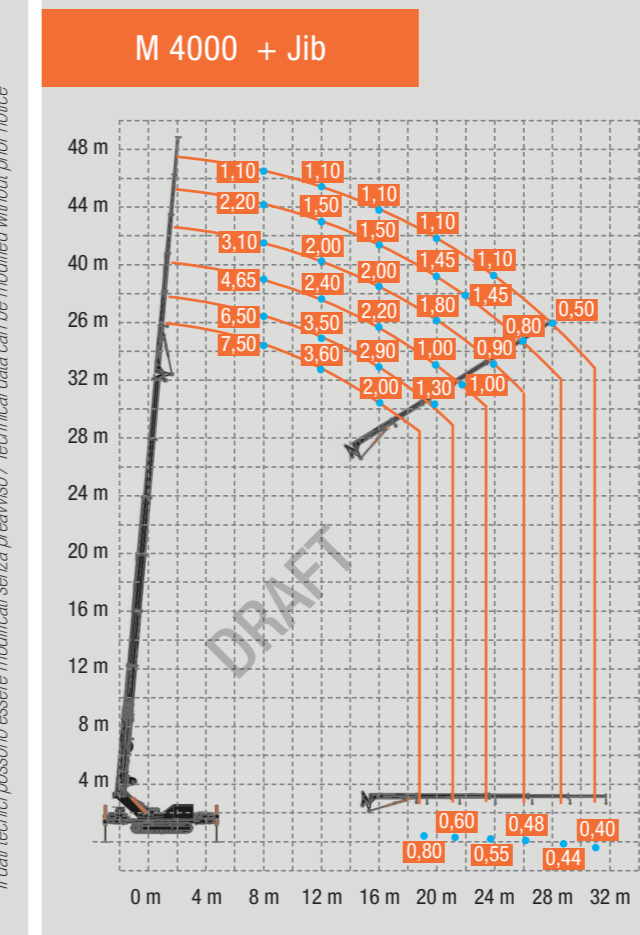
## Caratteristiche tecniche / Technical Specifications

	<b>Sovrastuttura:</b> Superstructure:	Torretta girevole con braccio telescopico a sfilii indipendenti. Rotating turret with telescopic boom and independent extension.
	<b>Telaio e stabilizzatori:</b> Chassis and outriggers:	Telaio in acciaio alto resistenziale con traverse di stabilizzazione ad uscita laterale incrociata e cilindri di sollevamento con corsa maggiorata. High-strength steel frame with stabilization crosshead exit and lifting cylinders with increased stroke.
	<b>Tasolazione:</b> Travel:	Cingoli di traslazione con riduttori epicicloidali con freno negativo e motori idraulici a doppia velocità azionati dal radiocomando. Travel tracks with planetary gear reducers with negative brake and hydraulic double speed motors operated by remote control.
	<b>Impianto idraulico:</b> Hydraulic system:	Load sensing con pompa idraulica a portata variabile e attuatori idraulici in sistema Can-Bus. Load sensing with variable displacement hydraulic pump and hydraulic actuators in Can-Bus system.
	<b>Impianto elettrico:</b> Electric system:	Sensori e centraline in Can-Bus completamente integrate con il radiocomando. Sensors and control units in CAN-Bus fully integrated with the remote control.
	<b>Rotazione:</b> Slewing:	Continua con ralla a doppio giro di sfere. N° 2 motoriduttori epicicloidali con freno negativo. Continue with double-round ball slewing table. 2 planetary gear motors with negative brake.
	<b>Argano:</b> Winch:	Idraulico installato sotto al braccio telescopico. Hydraulic installed under the telescopic boom.
	<b>Sollevamento braccio:</b> Lifting boom:	Con n° 2 cilindri laterali. With 2 Side Cylinder.
	<b>Braccio:</b> Main boom:	Telescopico con n° 6 cilindri idraulici indipendenti. Telescopic with 6 independent hydraulic cylinders.
	<b>Bozzello:</b> Hook block:	Da 24 T. 24 T.
	<b>Zavorra:</b> Ballast:	Automontante fino a 6,6 T. Self-erecting up to 6,6 T.
	<b>Dispositivi di sicurezza:</b> Safety device:	Limitatore di carico integrato con la posizione degli stabilizzatori. Valvole di blocco di sicurezza idropilotate. Fincorsa in salita e in discesa del bozzello. Integrated load limiting device with stabilizer position control. Hydro-driven safety lock valves. Up and down limit switch winch block.
	<b>Accessori a richiesta:</b> Additional equipment and accessories:	Jib idraulico con operatività 200°•Connessione idraulica Quick-Faster•Linee idrauliche per accessori•Prolunghe manuali•Ganci Ribassati•Attacchi ribassati per ventose•Cestelli Porta operatori CE•Argano a tiro diretto fino a 10 rinnavi•Ventose•Fari di lavoro su braccio•Fari di lavoro su carro•Verricello di traino•Generatore di corrente•Cassette di grandi dimensioni amovibili•Pianalino di carico amovibile•Motori elettrici 15Kw/400 V trifase con inverter•Piastrre maggiorate per stabilizzatori•Luci a LED per stabilizzatori•Pattini con gomma vulcanizzata antistraccia•Olio biodegradabile Hydraulic jib with opening up to 200°•Quick-faster hydraulic connection•Hydraulic line for accessorize•Manual extensions•Lowered hook connections•Lowered connections for vacuum glass lifters•Two man capacity baskets CE•Direct pull winch up to 10th fall•Vacuum glass lifters•Working LED lightson the boom•Working LED lightson the crawler•Towing winch•Electric generator •Removable large box•Removable loading flat bed•Three phases electric engines 15 kW/400 V with inverter•Bigger plates for outriggers•LED lights for outriggers•Rubber pads•Green oil

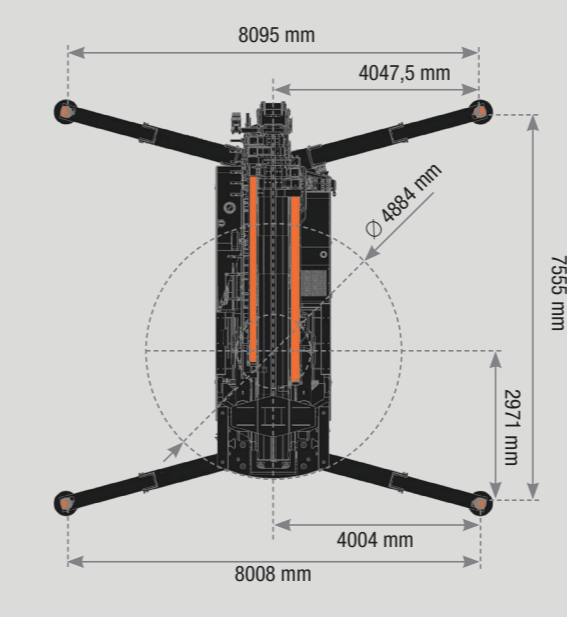
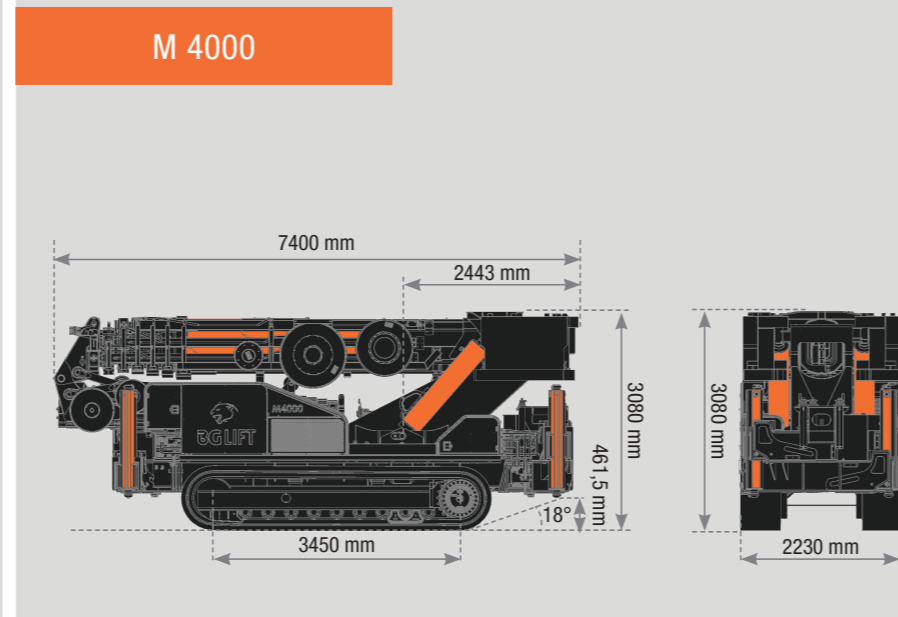
Il dati tecnici possono essere modificati senza preavviso / Technical data can be modified without prior notice







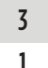













Il dati tecnici possono essere modificati senza preavviso / Technical data can be modified without prior notice



Il dati tecnici possono essere modificati senza preavviso / Technical data can be modified without prior notice



## Pesi accessori / Accessories weight

Portata Scope	Pullegge Pulleys	Peso Weight
		
40 T	5	405 Kg
		
24 T	3	263 Kg
		
8 T	1	170 Kg
		
4 T	0	47 Kg
		
9 T	-	10 Kg
		
30 T	-	57 Kg

- M4000 + Verricello / M4000 + Winch: 25200 kg**
- Jib: 2300 kg**
- Argano / Winch: 500 kg**
- Motori elettrici / Electric motors: 500 kg**
- Zavorra / Ballast: 6600 kg**
- Sovrappattini in gomma / Rubber pads: 630 kg**
- Tubazioni supplementari / Additional hose reel: 450 kg**