

2500 E



www.ommelift.com

Trailer lift - Telescopic

Dealer:

monitor LIFTS

Monitor Industries Pty Ltd

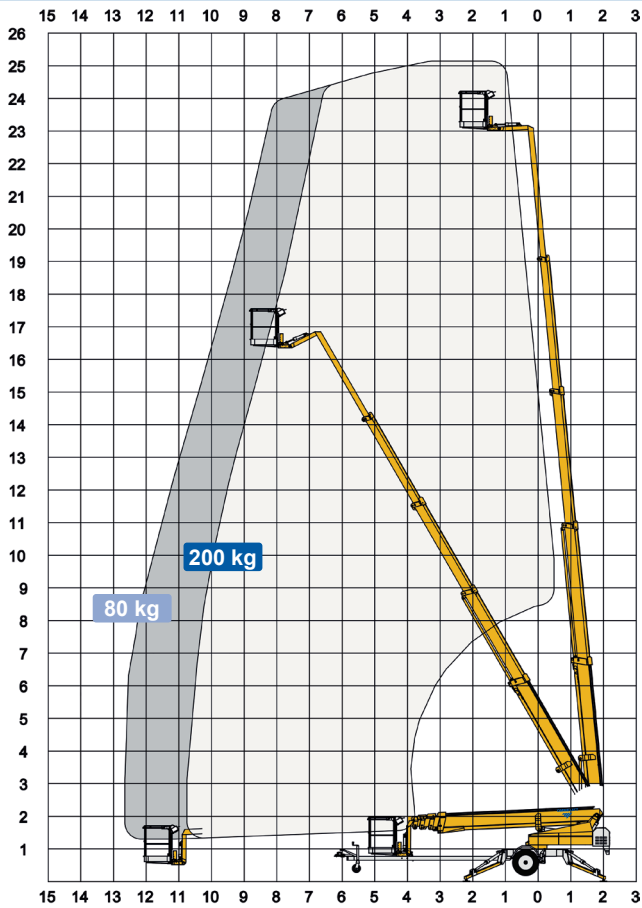
143 Gunnedah Road
Tamworth , NSW 2340 , Australia
+61 1800 025 024
sales@monitor.net.au
www.monitor.net.au

OMMELIFT



Built to last - ask our users!

2500 E Trailer lift



Technical Data:		2500 E	2500 EB	2500 EBD
Max. working height		25.1 m		
Max. platform height		23.1 m		
Max. outreach		12.6 m		
Up and over clearance		-		
Angle boom length (boom + basket)		2.0 m		
Jib length (jib + basket)		-		
Vertical jib rotation		-		
Turret rotation		± 355°		
Basket rotation		± 41°		
Max. basket load		200 kg		
Basket size		1.25 x 0.8 x 1.1 m		
Stabilizer pad size		ø200 mm		
	⁵ Petrol ⁶ Diesel	230V / 16A	BATTERY	HYBRID
Engine		⁵ Optional ⁶	⁵ Optional ⁶	⁶ 14kW/18.8hp
Fuel tank capacity				16 l
Generator				24 V / 22 A
Battery pack			24V/200Ah/5h	24V/200Ah/5h
Charger			24 V / 30 A	24 V / 30 A
Double charger system			Optional	Optional
Elec. descent		Optional	Optional	Optional
See www.ommelift.com for more features and options				
Self-propulsion with hydraulic engagement of traction rollers		Standard		
Gradeability		14% / 8°		
Ground to tire clearance at max. set-up		Min. 170 mm (5.9% / 3.4°)		
Engine only version available				
Total weight		3000 kg	3060 kg	3180 kg
Ground pressure, outrigger pad		20.0 kg/cm ²	20.0 kg/cm ²	20.0 kg/cm ²
Ground pressure with 0.4 x 0.4 m spreader plate		1.1 kg/cm ²	1.1 kg/cm ²	1.1 kg/cm ²
Max. force, outrigger		17.1 kN	17.1 kN	17.1 kN
Hydraulic stabilizers		Standard		
Controls		Proportional		
Flush basket mount		Standard		
Elec. power outlet in basket		Standard		
Tool trays in basket		Standard		

