

# monitor LiFTS

SYDNEY MELBOURNE BRISBANE TAMWORTH

monitor.net.au • 1800 025 024



monitor LiFTS

# MONITOR ML810 MAST LIFT



# MONITOR ML810

Designed for indoor and outdoor use, these super-compact tracked mast-lifts are ideal for up-and-over access in very confined areas.

The tracks provide excellent stability and traction off-road, and also a soft gentle footprint inside buildings and on other fragile surfaces.

A standout feature of Monitor's Mast Lifts is their rugged design and very simple control systems. These combine to make these machines bullet proof in all types of rough conditions.

Pilot operated hydraulic controls are not only very smooth to use, but are also extremely reliable and remain unaffected by wet conditions that often play havoc with other designs.

The 1.2 m width of the ML's along with their zero turning radius is an outstanding combination for operating in laneways or narrow aisles, and their long hydraulic fly-jib provides the outreach needed to access areas above obstacles such as shelving etc.

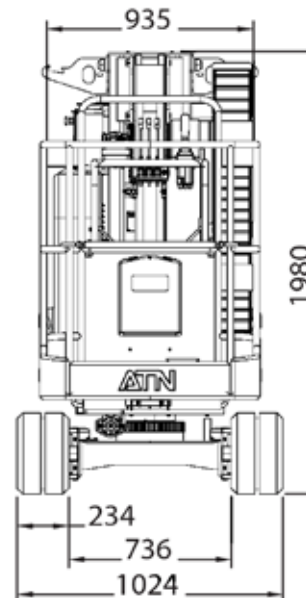
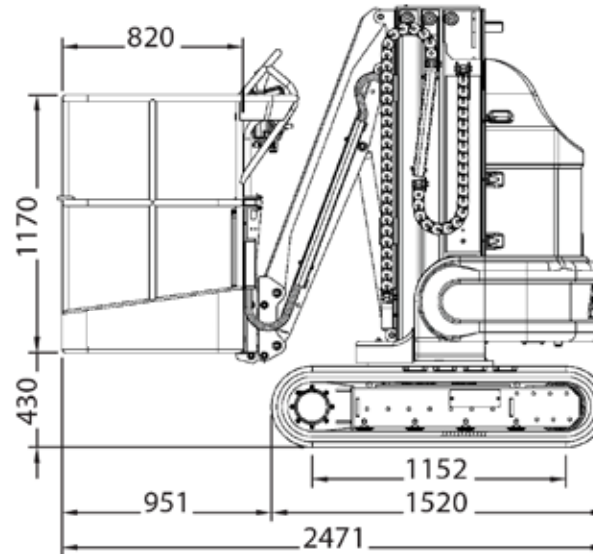
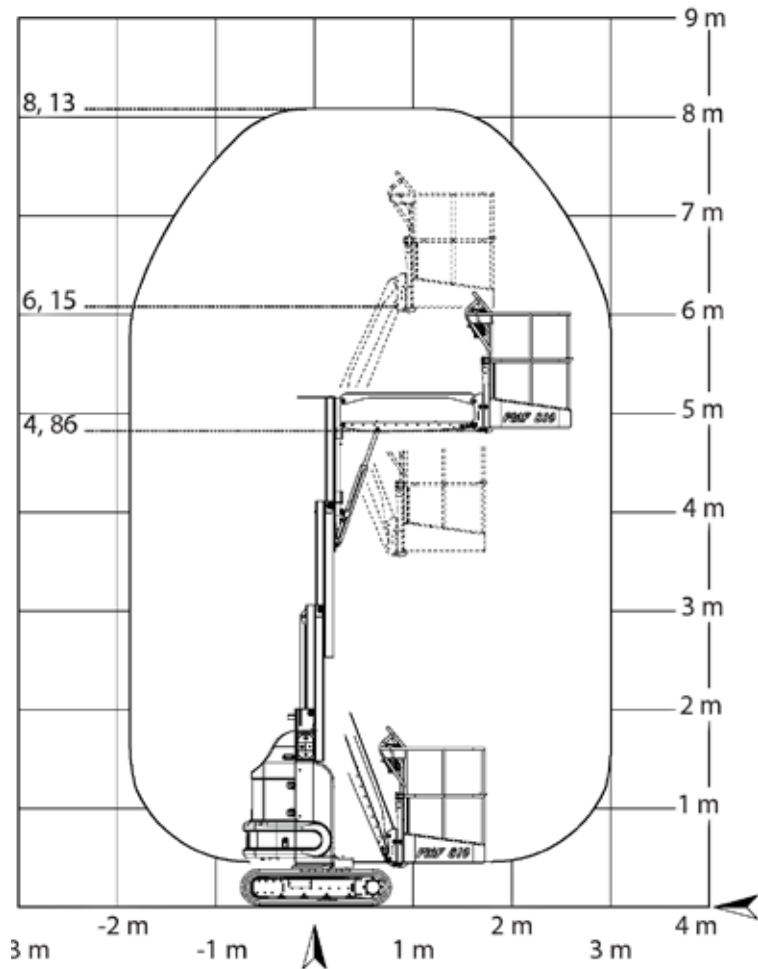


**8.10m**  
WORKING HEIGHT





# TECHNICAL SPECIFICATIONS



Max working height	8.10 m
Max horizontal outreach	3.0 m
Max rated capacity	200 kg
Weight	2200 kg
Turret rotation	220°
Max permissible tilt	5°
Ground pressure driving (approx)	49 kN/m <sup>2</sup>
Traffic load (live load) travelling	7.4 kN/m <sup>2</sup>
Gradeability lengthwise	16°
Gradeability sideways	16°
Standard power source	Batteries
Expanding tracks	N/A
Max drive speed	1.8 km/h
Electric emergency lowering	Optional
Outdoor rating	2 persons

(All specs E&OE and subject to change)





# GET IN TOUCH

You may contact us at [monitor.net.au](http://monitor.net.au), or call us at 1800 025 024.

