

# OMME2750



**Omme's non-marking tracks are very gentle on sensitive flooring, and the radio-control drive provides ease of manoeuvring in tight areas.**

**With a stowed width of only 1.1 m, the Omme is perfect for driving down narrow paths and through small gate openings.**



At only 3725 kg in weight, this 27 metre Spider Lift can easily be transported and even craned into difficult locations. (Lifting points and procedures are standard with all Monitor Spider Lifts.)

The Ommes all have a huge amount of travel in their dual position stabiliser legs, allowing them to set up on the most difficult areas, including sloping or very uneven terrain.

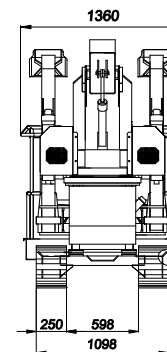
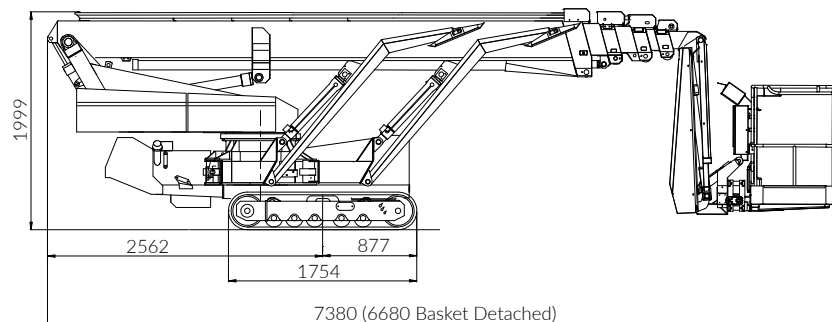
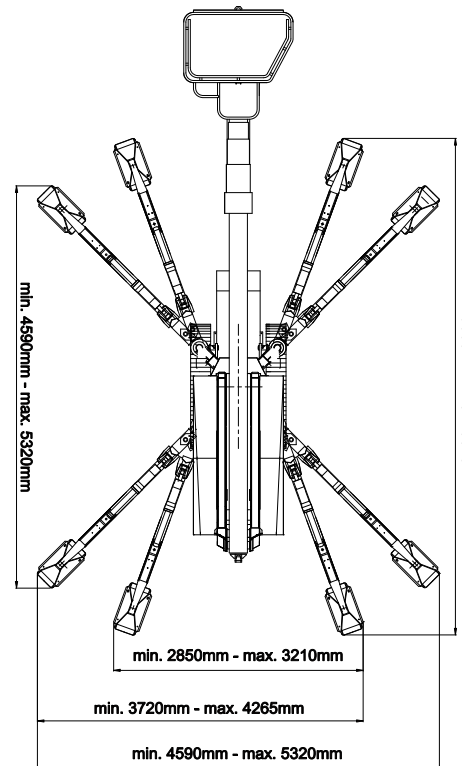
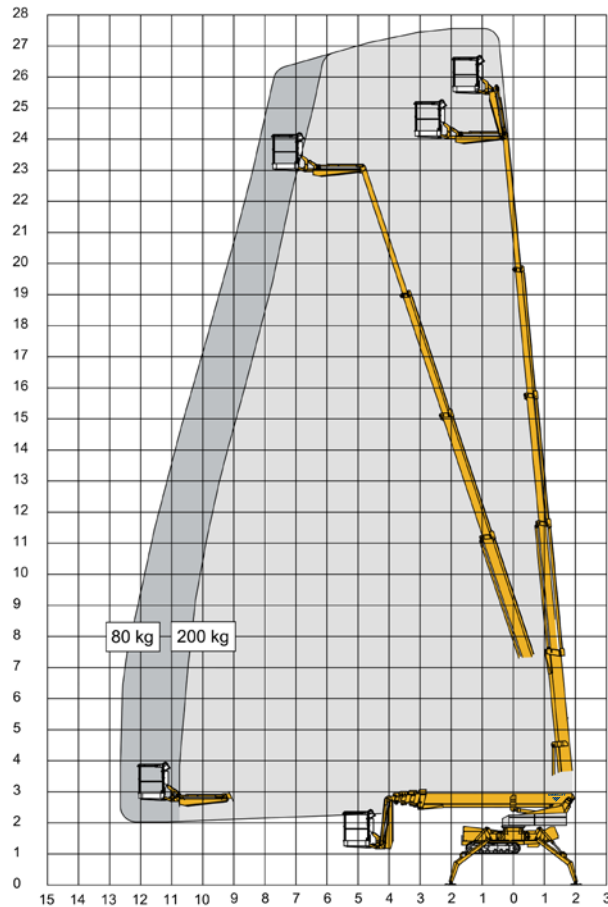


**Above left:** Welcome! The 2750 demonstrates doorway access, and the gentle non-marking tracks protect fragile surfaces.

**Above middle:** The strong steel boom glides out on a series of large rollers giving an exceptionally smooth ride and very stable platform.

**Above right:** The basket is easily removed and access indoors is a breeze.

# OMME2750



<b>Max working height</b>	<b>27.20 m</b>
Max working height in narrow set	19.50 m
<b>Max horizontal outreach</b>	<b>12.60 m</b>
Max rated capacity	200 kg
<b>Weight: Std tracks</b>	<b>3725 kg</b>
: Expandable tracks	3875 kg
Turret rotation	710°
Basket rotation	100°
Ground pressure driving (approx)	55 kN/m <sup>2</sup>
Max stabiliser force	24.8 kN
Max stabiliser pressure (std foot pad)	198 kN/m <sup>2</sup>
Traffic load (live load) travelling	4.2 kN/m <sup>2</sup>
Traffic load (live load) stabilised wide	2.1 kN/m <sup>2</sup>
Traffic load (live load) stabilised narrow	2.9 kN/m <sup>2</sup>
Auto levelling	Std
Max slope for stabilisers (no extra pads)	21.8°
Gradeability lengthwise	19.3°
Gradeability sideways	14°
Standard engine	Kubota 20 Hp Diesel
Dual power options	Batteries
Expanding tracks	Optional
Max drive speed	1.45 km/h
Radio control	Std
Electric emergency lowering	Std

(All specs E&OE and subject to change)